

# Nut & Bolt Faucet Installation



# Nut & Bolt Faucet Installation



## STEP 1

- Layout all faucet components that will be installed.



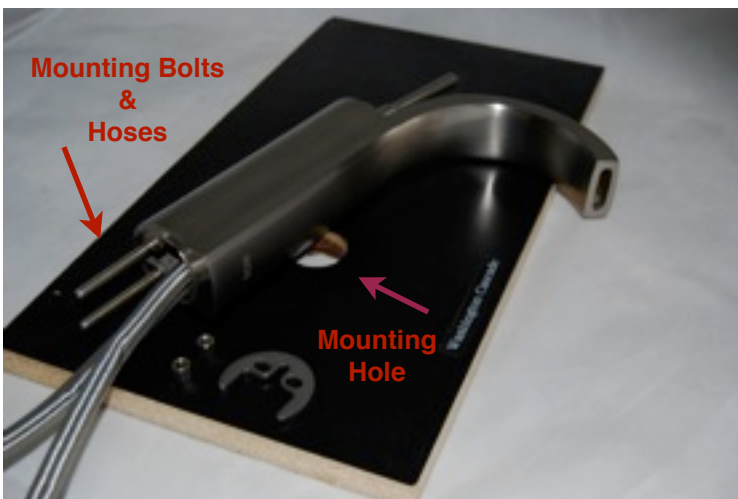
## STEP 2

- Turn faucet head to expose water supply attachment plugs holes. Attach water supply lines, *HAND TIGHTEN* to a firm and snug connection.

**Extremely Important!!!**

**DO NOT Use Wrench to Tighten**

**HAND TIGHTEN ONLY**



## STEP 3

- Set faucet over faucet hole, feeding supply lines & mounting bolts through hole.

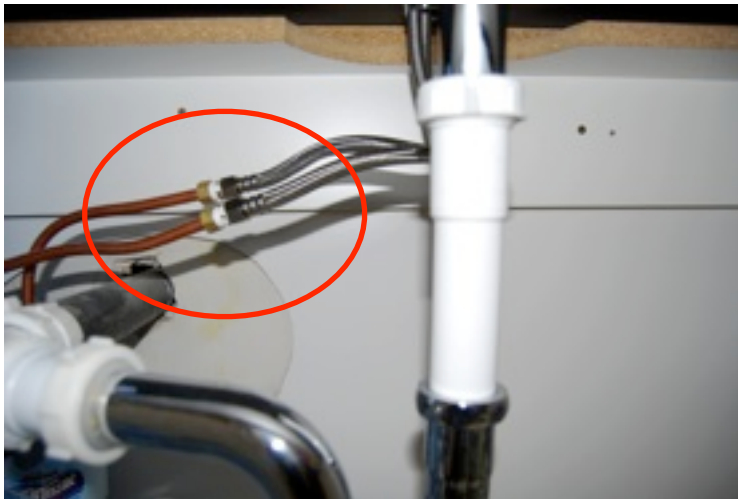
**NOTE:** You may need to feed just one water supply line through the hole and then bring the second line up from the bottom of the counter top.

# Nut & Bolt Faucet Installation



## STEP 4

- Have someone hold the faucet in the proper alignment to the sink, while the second person attaches the horse shoe mounting plate bracket through the attaching bolts. When the mounting plate is pushed against the bottom of the counter top, and the bolts are through the mounting plate bracket, screw the bolt nuts all the way until the faucet is secure and will not move. Use a crescent wrench or 1/2" box wrench to tighten nuts.



## STEP 5

- Attach faucet water lines to shut off valves.
- Turn on water and check for leaks.

NOTE: If water supply lines that were supplied by faucet manufacturer do not reach, an extension supply line with a connecting nipple may be needed which may be obtained from your local plumbing supply.

Also, *ALL* threads should have plumbers tape applied. This will help stop leaks and also make taking them apart easier in the future.

# WARNING

Do not install any Green Leaf products with out intensive inspection. Once installed there will be no recourse for free replacement. All Green Leaf products are pre-inspected by our quality control personal for flaws, chips, discoloration BEFORE being released to a customer. Contact a Green Leaf Customer Service Representative with in 30 days from the delivery date. After 30 days there is no replacement for any damaged material. However all claims either inside or outside the warranty date will be reviewed.

Green Leaf will not be responsible for breakage do to improper installation. **BE SURE** to read and **Follow ALL Directions** provided by Green Leaf. If for any reason you can not understand the information & directions provided in the carton, you should call Customer Service direct Monday – Friday between the hours of 9am – 6pm PST; and Saturday from 9am – 2pm. Also you can leave a message and a Customer Service Agent will get back to you. Call 888-509-4140 or 509-943-4140. Fax is 509-943-4160.

## **Rules to Help with a Happy and Finished Project**

1. DO NOT OVER TIGHTEN ANY NUT LARGE OR SMALL.
2. WHEN INSTALLING STONE, PORCELAIN, OR METAL VESSEL SINKS, GLUE THE SINK TO THE TOP WITH GE 100% CLEAR SILICONE AND LET SET FOR 3-12 HOURS UNTIL SINK IS COMPLETELY FIRM ON THE COUNTERTOP.
3. WHEN INSTALLING GLASS SINKS BE SURE TO USE A CONNECTING RING THAT IS FROM WORLD OF SINKS OR GREEN LEAF KITCHEN AND BATH PRODUCTS.
4. GREEN LEAF DOES NOT RECOMMEND RECESSING ANY VESSEL SINK
5. DO NOT OVER TIGHTEN POP-UP OR ANY DRAIN ASSEMBLY. SINK SHOULD BE SETTING FIRM BUT NOT RIGID, BREAKAGE MAY OCCUR.
6. USE PLUMBERS TAPE ON ALL DRAIN PIPE THREADS.
7. ALL ACCESS HOLES FOR FAUCETS AND SINKS ARE 1-1/4" FOR FAUCETS AND 1 5/8" FOR SINKS.
8. SET FAUCETS FIRST AND CHECK FOR LEAKS. FOLLOW INSTALLATION ON THE PROPER FAUCET TO BE INSTALLED.
9. **DO NOT OVER TIGHTEN WATER SUPPLY LINES!!!** HAND TIGHTEN TO A FIRM PRESSURE.
10. FOR VANITIES THAT ARE WALL HUNG, BE SURE TO INTSAL BACKER BOARDS BETWEEN THE STUDS BEFORE SHEET ROCKING. 2" X 8" MINIMUM.
11. ALL BATH CABINETS SHOULD NOT BE OVER 30" IN HEIGHT FROM FLOOR TO TOP OF COUNTER TOP. THIS GIVES ROOM FOR THE VESSEL SINK TO NOT BE OVER 37" FROM THE FLOOR TO THE TOP OF THE SINK. UNDER MOUNT SINKS MAY HAVE A TALLER CABINET. 34" TO 36" FROM FLOOR TO TOP.

### **IMPORTANT**

ALWAYS CHECK FOR LEAKS AND DAMAGE BEFORE THE FINISH OF THE PROJECT

THANK YOU - GREEN LEAF

## Very Important

After connecting the O-ring water lines to a firm position, make sure you hold on to the water supply line so it can not turn when hooking up to the shut off valve.

So often when plumbers are wrenching the water supply line nut to the shut off valve, they are inadvertently loosening the O-ring end where they are attached to the faucet.

One needs to hold the water line with one hand while tightening the nut to the shut off valve with the other hand.

Thank You,  
Installation Staff

### Faucets

Note: All World of Sinks faucets are either a nipple thread nut system or a nut & bolt system. The faucet type and shape will change but the installation of one or the other faucet attachment will stay the same. Check to see which one you have.

### Procedure for installation

1. Faucet hole size is 1 1/4 inch
2. Attach water supply lines, if not already attached (hand tighten to snug)
3. Feed lines attached to faucet through faucet hole
4. Attach connecting ring & bolts
5. Connect water lines to shut-off valve. Supply lines may need extenders.
6. Check for leaks

THANK YOU - GREEN LEAF



**Green Leaf**<sup>®</sup>  
KITCHEN & BATH PRODUCTS